



Certificate of Analysis

CANNABUSINESS LABORATORIES, LLC

Customer:

Pharm CBD
2580 Highway 42 West
Bedford, KY 40006

Sample ID **230914086**
Order Number **CB230914005**
Sample Name **CP-FSE-C-23006-002**

Received Date **9/14/2023**
COA Released **9/18/2023**

External Sample ID
Batch Number **CP-FSE-C-23006**

Comments

Product Type **Concentrate**
Sample Type **Concentrate**

CANNABINOID PROFILE

Analyte	LOQ (%)	% Weight	mg/g
CBC	0.01	0.207	2.066
CBD	0.01	4.034	40.34
CBDa	0.01	0.433	4.325
CBDV	0.01	ND	ND
CBG	0.01	0.061	0.610
CBGa	0.01	0.019	0.194
CBN	0.01	0.018	0.176
d8-THC	0.01	0.033	0.330
d9-THC	0.01	0.127	1.269
THCa	0.01	ND	ND
Total Cannabinoids		4.931	49.31
Total Potential THC		0.127	1.269
Total Potential CBD		4.414	44.14
Total Potential CBG		0.078	0.780

Ratio of Total Potential CBD to Total Potential THC **34.76 : 1**

Ratio of Total Potential CBG to Total Potential THC **0.61 : 1**

*Total Cannabinoids refers to the sum of all cannabinoids detected.

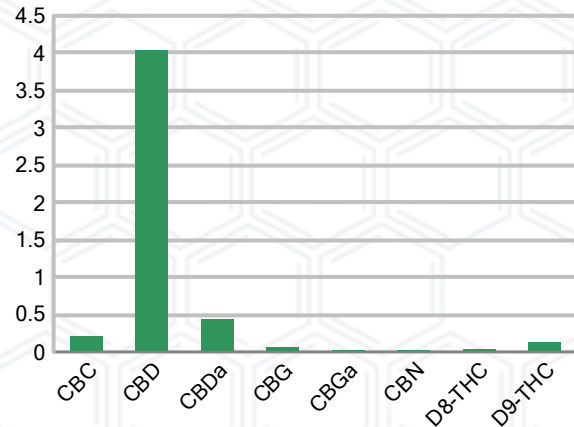
*Total Potential CBD = (0.877 x CBDa) + CBD. *Total Potential THC = (0.877 x THCa) + THC. *Total Potential CBG = (0.877 x CBGa) + CBG.

*Total Potential THC/CBD are calculated to take into account the loss of an acid group during decarboxylation.

SAMPLE IMAGE



CANNABINOIDS % Weight



J. Hobgood
Laboratory Manager

SIGNATURE

Jamie Hobgood

LABORATORY MANAGER

09/18/2023 11:53 AM

DATE

This product has been tested by CannaBusiness Laboratories using validated testing methodologies and a quality system. Values reported relate only to the product tested. CannaBusiness Laboratories makes no claims as to the efficacy, safety, or other risks associated with any detected or non-detected levels of any compounds reported herein. This Certificate shall not be reproduced except in full, without the written permission of CannaBusiness Laboratories. Photo is of sample received by the lab and may vary from final packaging. The results apply to the sample as received.





Certificate of Analysis

CANNABUSINESS LABORATORIES, LLC

Customer

Pharm CBD
2580 Highway 42 West
Bedford, KY 40006



Sample Name: CP-FSE-C-23006-002

Sample ID: 230914086

Order Number: CB230914005

Product Type: Concentrate

Sample Type: Concentrate

Received Date: 09/14/2023

Batch Number: CP-FSE-C-23006

COA released: 09/18/2023 11:53 AM

Potency (mg/g)			
Date Tested: 09/15/2023		Method: CB-SOP-028	
Instrument:			
0.127 %	4.414 %	4.931 %	49.31 mg/g
Total THC	Total CBD	Total Cannabinoids	Total Cannabinoids

Analyte	Result	Units	LOQ	Result	Units
CBC (Cannabichromene)	0.207	%	0.010	2.066	mg/g
CBD (Cannabidiol)	4.034	%	0.010	40.34	mg/g
CBDa (Cannabidiolic Acid)	0.433	%	0.010	4.325	mg/g
CBDV (Cannabidivarin)	ND	%	0.010	ND	mg/g
CBG (Cannabigerol)	0.061	%	0.010	0.610	mg/g
CBGa (Cannabigerolic Acid)	0.019	%	0.010	0.194	mg/g
CBN (Cannabinol)	0.018	%	0.010	0.176	mg/g
D8-THC (D8-Tetrahydrocannabinol)	0.033	%	0.010	0.330	mg/g
D9-THC (D9-Tetrahydrocannabinol)	0.127	%	0.010	1.269	mg/g
THCa (Tetrahydrocannabinolic Acid)	ND	%	0.010	ND	mg/g



J. Hobgood
Laboratory Manager

Jamie Hobgood

09/18/2023 11:54 AM

SIGNATURE

DATE

NT = Not tested, ND = Not detected; LOQ = Limit of Quantitation; <LOQ = Detected; >ULOL = Above upper limit of linearity; CFU/g = Colony forming units per 1 gram; TNTC = Too numerous to count

This product has been tested by CannaBusiness Laboratories using validated testing methodologies and a quality system. Values reported relate only to the product tested. CannaBusiness Laboratories makes no claims as to the efficacy, safety, or other risks associated with any detected or non-detected levels of any compounds reported herein. This Certificate shall not be reproduced except in full, without the written permission of CannaBusiness Laboratories. Photo is of sample received by the lab and may vary from final packaging. The results apply to the sample as received.