



Certificate of Analysis

CANNABUSINESS LABORATORIES, LLC

Customer:

Pharm CBD
2580 Highway 42 West
Bedford, KY 40006

Sample ID **230914085**
Order Number **CB230914005**
Sample Name **CP-FSE-P-23007-001**

External Sample ID

Batch Number **CP-FSE-P-23007**

Received Date **9/14/2023**
COA Released **9/15/2023**

Product Type **Concentrate**
Sample Type **Concentrate**

Comments

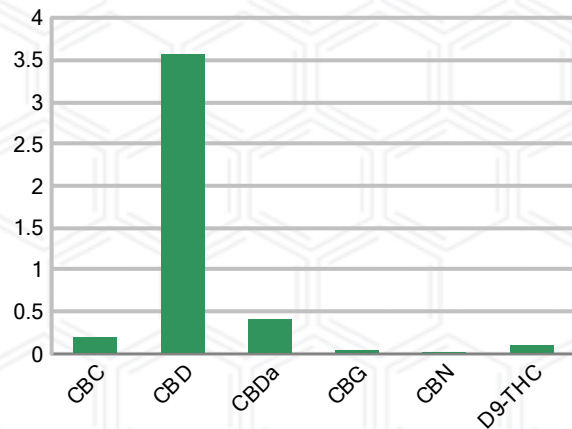
CANNABINOID PROFILE

Analyte	LOQ (%)	% Weight	mg/g
CBC	0.01	0.193	1.933
CBD	0.01	3.563	35.63
CBDa	0.01	0.415	4.151
CBDV	0.01	ND	ND
CBG	0.01	0.043	0.428
CBGa	0.01	ND	ND
CBN	0.01	0.015	0.147
d8-THC	0.01	ND	ND
d9-THC	0.01	0.096	0.962
THCa	0.01	ND	ND
Total Cannabinoids		4.325	43.25
Total Potential THC		0.096	0.962
Total Potential CBD		3.927	39.27
Total Potential CBG		0.043	0.428
Ratio of Total Potential CBD to Total Potential THC			40.91 : 1
Ratio of Total Potential CBG to Total Potential THC			0.45 : 1

SAMPLE IMAGE



CANNABINOIDS % Weight



*Total Cannabinoids refers to the sum of all cannabinoids detected.

*Total Potential CBD = (0.877 x CBDa) + CBD. *Total Potential THC = (0.877 x THCa) + THC. *Total Potential CBG = (0.877 x CBGa) + CBG.

*Total Potential THC/CBD are calculated to take into account the loss of an acid group during decarboxylation.



J. Hobgood
Laboratory Manager

SIGNATURE

Jamie Hobgood

LABORATORY MANAGER

09/15/2023 5:02 PM

DATE

This product has been tested by CannaBusiness Laboratories using validated testing methodologies and a quality system. Values reported relate only to the product tested. CannaBusiness Laboratories makes no claims as to the efficacy, safety, or other risks associated with any detected or non-detected levels of any compounds reported herein. This Certificate shall not be reproduced except in full, without the written permission of CannaBusiness Laboratories. Photo is of sample received by the lab and may vary from final packaging. The results apply to the sample as received.





Certificate of Analysis

CANNABUSINESS LABORATORIES, LLC

Customer

Pharm CBD
2580 Highway 42 West
Bedford, KY 40006



Sample Name: CP-FSE-P-23007-001

Sample ID: 230914085

Order Number: CB230914005

Product Type: Concentrate

Sample Type: Concentrate

Received Date: 09/14/2023

Batch Number: CP-FSE-P-23007

COA released: 09/15/2023 5:02 PM

Potency (mg/g)			
Date Tested: 09/14/2023		Method: CB-SOP-028	
Instrument:			
0.096 %	3.927 %	4.325 %	43.25 mg/g
Total THC	Total CBD	Total Cannabinoids	Total Cannabinoids

Analyte	Result	Units	LOQ	Result	Units
CBC (Cannabichromene)	0.193	%	0.010	1.933	mg/g
CBD (Cannabidiol)	3.563	%	0.010	35.63	mg/g
CBDa (Cannabidiolic Acid)	0.415	%	0.010	4.151	mg/g
CBDV (Cannabidivarin)	ND	%	0.010	ND	mg/g
CBG (Cannabigerol)	0.043	%	0.010	0.428	mg/g
CBGa (Cannabigerolic Acid)	ND	%	0.010	ND	mg/g
CBN (Cannabinol)	0.015	%	0.010	0.147	mg/g
D8-THC (D8-Tetrahydrocannabinol)	ND	%	0.010	ND	mg/g
D9-THC (D9-Tetrahydrocannabinol)	0.096	%	0.010	0.962	mg/g
THCa (Tetrahydrocannabinolic Acid)	ND	%	0.010	ND	mg/g



J. Hobgood
Laboratory Manager

Jamie Hobgood

09/15/2023 5:02 PM

SIGNATURE

DATE

NT = Not tested, ND = Not detected; LOQ = Limit of Quantitation; <LOQ = Detected; >ULOL = Above upper limit of linearity; CFU/g = Colony forming units per 1 gram; TNTC = Too numerous to count

This product has been tested by CannaBusiness Laboratories using validated testing methodologies and a quality system. Values reported relate only to the product tested. CannaBusiness Laboratories makes no claims as to the efficacy, safety, or other risks associated with any detected or non-detected levels of any compounds reported herein. This Certificate shall not be reproduced except in full, without the written permission of CannaBusiness Laboratories. Photo is of sample received by the lab and may vary from final packaging. The results apply to the sample as received.