



# Certificate of Analysis

## CANNABUSINESS LABORATORIES, LLC

### Customer:

Pharm CBD  
2580 Highway 42 West  
Bedford, KY 40006

Sample ID **230825009**  
Order Number **CB230825006**  
Sample Name **23032-1**

External Sample ID

Batch Number

Product Type **Other**

Sample Type **Other**

Received Date **8/25/2023**

COA Released **8/29/2023**

Comments

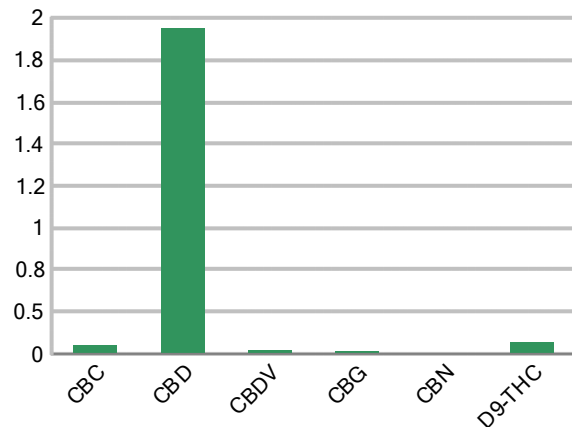
### CANNABINOID PROFILE

Analyte	LOQ (%)	% Weight	mg/g
CBC	0.01	0.098	0.981
CBD	0.01	1.869	18.69
CBDa	0.01	ND	ND
CBDV	0.01	0.043	0.426
CBG	0.01	0.034	0.339
CBGa	0.01	ND	ND
CBN	0.01	0.011	0.107
d8-THC	0.01	ND	ND
d9-THC	0.01	0.132	1.318
THCa	0.01	ND	ND
<b>Total Cannabinoids</b>		<b>2.186</b>	<b>21.86</b>
<b>Total Potential THC</b>		<b>0.132</b>	<b>1.318</b>
<b>Total Potential CBD</b>		<b>1.869</b>	<b>18.69</b>
<b>Total Potential CBG</b>		<b>0.034</b>	<b>0.339</b>
<b>Ratio of Total Potential CBD to Total Potential THC</b>			<b>14.16 : 1</b>
<b>Ratio of Total Potential CBG to Total Potential THC</b>			<b>0.26 : 1</b>

### SAMPLE IMAGE



### CANNABINOIDS % Weight



\*Total Cannabinoids refers to the sum of all cannabinoids detected.

\*Total Potential CBD = (0.877 x CBDa) + CBD. \*Total Potential THC = (0.877 x THCa) + THC. \*Total Potential CBG = (0.877 x CBGa) + CBG.

\*Total Potential THC/CBD are calculated to take into account the loss of an acid group during decarboxylation.



*J. Hobgood*  
Laboratory Manager

SIGNATURE

Jamie Hobgood

LABORATORY MANAGER

08/29/2023 1:36 PM

DATE

This product has been tested by CannaBusiness Laboratories using validated testing methodologies and a quality system. Values reported relate only to the product tested. CannaBusiness Laboratories makes no claims as to the efficacy, safety, or other risks associated with any detected or non-detected levels of any compounds reported herein. This Certificate shall not be reproduced except in full, without the written permission of CannaBusiness Laboratories. Photo is of sample received by the lab and may vary from final packaging. The results apply to the sample as received.





# Certificate of Analysis

## CANNABUSINESS LABORATORIES, LLC

### Customer

Pharm CBD  
2580 Highway 42 West  
Bedford, KY 40006



**Sample Name:** 23032-1

**Sample ID:** 230825009

**Order Number:** CB230825006

**Product Type:** Other

**Sample Type:** Other

**Received Date:** 08/25/2023

**Batch Number:**

**COA released:** 08/29/2023 1:36 PM

Potency (mg/g)			
Date Tested: 08/28/2023		Method: CB-SOP-028	
Instrument:			
<b>0.132 %</b>	<b>1.869 %</b>	<b>2.186 %</b>	<b>21.86 mg/g</b>
Total THC	Total CBD	Total Cannabinoids	Total Cannabinoids

Analyte	Result	Units	LOQ	Result	Units
CBC (Cannabichromene)	0.098	%	0.010	0.981	mg/g
CBD (Cannabidiol)	1.869	%	0.010	18.69	mg/g
CBDa (Cannabidiolic Acid)	ND	%	0.010	ND	mg/g
CBDV (Cannabidivarin)	0.043	%	0.010	0.426	mg/g
CBG (Cannabigerol)	0.034	%	0.010	0.339	mg/g
CBGa (Cannabigerolic Acid)	ND	%	0.010	ND	mg/g
CBN (Cannabinol)	0.011	%	0.010	0.107	mg/g
D8-THC (D8-Tetrahydrocannabinol)	ND	%	0.010	ND	mg/g
D9-THC (D9-Tetrahydrocannabinol)	0.132	%	0.010	1.318	mg/g
THCa (Tetrahydrocannabinolic Acid)	ND	%	0.010	ND	mg/g



*J. Hobgood*  
Laboratory Manager

Jamie Hobgood

08/29/2023 1:36 PM

SIGNATURE

DATE

NT = Not tested, ND = Not detected; LOQ = Limit of Quantitation; <LOQ = Detected; >ULOL = Above upper limit of linearity; CFU/g = Colony forming units per 1 gram; TNTC = Too numerous to count

This product has been tested by CannaBusiness Laboratories using validated testing methodologies and a quality system. Values reported relate only to the product tested. CannaBusiness Laboratories makes no claims as to the efficacy, safety, or other risks associated with any detected or non-detected levels of any compounds reported herein. This Certificate shall not be reproduced except in full, without the written permission of CannaBusiness Laboratories. Photo is of sample received by the lab and may vary from final packaging. The results apply to the sample as received.