



Certificate of Analysis

CANNABUSINESS LABORATORIES, LLC

Customer:

Pharm CBD
2580 Highway 42 West
Bedford, KY 40006

Sample ID **230403019**
Order Number **CB230403005**
Sample Name **23060-1**

Received Date **8/28/2023**
COA Released **8/30/2023**

External Sample ID

Batch Number
Product Type **Concentrate**
Sample Type **Concentrate**

Comments

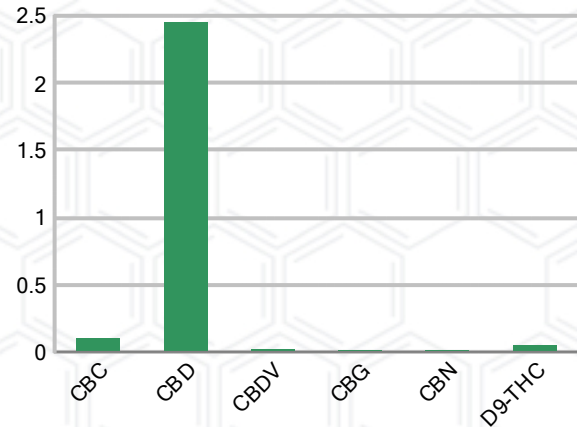
CANNABINOID PROFILE

Analyte	LOQ (%)	% Weight	mg/g
CBC	0.01	0.098	0.983
CBD	0.01	2.448	24.48
CBDa	0.01	ND	ND
CBDV	0.01	0.016	0.165
CBG	0.01	0.012	0.123
CBGa	0.01	ND	ND
CBN	0.01	0.013	0.132
d8-THC	0.01	ND	ND
d9-THC	0.01	0.049	0.486
THCa	0.01	ND	ND
Total Cannabinoids		2.636	26.36
Total Potential THC		0.049	0.486
Total Potential CBD		2.448	24.48
Total Potential CBG		0.012	0.123
Ratio of Total Potential CBD to Total Potential THC			49.96 : 1
Ratio of Total Potential CBG to Total Potential THC			0.25 : 1

SAMPLE IMAGE



CANNABINOIDS % Weight



*Total Cannabinoids refers to the sum of all cannabinoids detected.

*Total Potential CBD = (0.877 x CBDa) + CBD. *Total Potential THC = (0.877 x THCa) + THC. *Total Potential CBG = (0.877 x CBGa) + CBG.

*Total Potential THC/CBD are calculated to take into account the loss of an acid group during decarboxylation.



J. Hobgood
Laboratory Manager

SIGNATURE

Jamie Hobgood

LABORATORY MANAGER

08/30/2023 2:38 PM

DATE

This product has been tested by CannaBusiness Laboratories using validated testing methodologies and a quality system. Values reported relate only to the product tested. CannaBusiness Laboratories makes no claims as to the efficacy, safety, or other risks associated with any detected or non-detected levels of any compounds reported herein. This Certificate shall not be reproduced except in full, without the written permission of CannaBusiness Laboratories. Photo is of sample received by the lab and may vary from final packaging. The results apply to the sample as received.



Certificate of Analysis

CANNABUSINESS LABORATORIES, LLC

Customer

Pharm CBD
2580 Highway 42 West
Bedford, KY 40006



Sample Name: 23060-1

Sample ID: 230403019

Order Number: CB230403005

Product Type: Concentrate

Sample Type: Concentrate

Received Date: 08/28/2023

Batch Number:

COA released: 08/30/2023 2:38 PM

Potency (mg/g)			
Date Tested: 08/28/2023		Method: CB-SOP-028	
Instrument:			
0.049 %	2.448 %	2.636 %	26.36 mg/g
Total THC	Total CBD	Total Cannabinoids	Total Cannabinoids

Analyte	Result	Units	LOQ	Result	Units
CBC (Cannabichromene)	0.098	%	0.010	0.983	mg/g
CBD (Cannabidiol)	2.448	%	0.010	24.48	mg/g
CBDa (Cannabidiolic Acid)	ND	%	0.010	ND	mg/g
CBDV (Cannabidivarin)	0.016	%	0.010	0.165	mg/g
CBG (Cannabigerol)	0.012	%	0.010	0.123	mg/g
CBGa (Cannabigerolic Acid)	ND	%	0.010	ND	mg/g
CBN (Cannabinol)	0.013	%	0.010	0.132	mg/g
D8-THC (D8-Tetrahydrocannabinol)	ND	%	0.010	ND	mg/g
D9-THC (D9-Tetrahydrocannabinol)	0.049	%	0.010	0.486	mg/g
THCa (Tetrahydrocannabinolic Acid)	ND	%	0.010	ND	mg/g



J. Hobgood
Laboratory Manager

Jamie Hobgood

08/30/2023 2:38 PM

SIGNATURE

DATE

NT = Not tested, ND = Not detected; LOQ = Limit of Quantitation; <LOQ = Detected; >ULOL = Above upper limit of linearity; CFU/g = Colony forming units per 1 gram; TNTC = Too numerous to count

This product has been tested by CannaBusiness Laboratories using validated testing methodologies and a quality system. Values reported relate only to the product tested. CannaBusiness Laboratories makes no claims as to the efficacy, safety, or other risks associated with any detected or non-detected levels of any compounds reported herein. This Certificate shall not be reproduced except in full, without the written permission of CannaBusiness Laboratories. Photo is of sample received by the lab and may vary from final packaging. The results apply to the sample as received.