



Certificate of Analysis

CANNABUSINESS LABORATORIES, LLC

Customer:

Pharm CBD
2580 Highway 42 West
Bedford, KY 40006

Sample ID **230220002**
Order Number **CB230220002**
Sample Name **23015-1**

Received Date **2/20/2023**
COA Released **2/22/2023**

External Sample ID

Batch Number **23015**
Product Type **Concentrate**
Sample Type **Concentrate**

Comments

CANNABINOID PROFILE

Analyte	LOQ (%)	% Weight	mg/g
CBC	0.01	0.037	0.373
CBD	0.01	1.079	10.79
CBDa	0.01	1.664	16.64
CBDV	0.01	ND	ND
CBG	0.01	0.017	0.171
CBGa	0.01	0.017	0.172
CBN	0.01	ND	ND
d8-THC	0.01	ND	ND
d9-THC	0.01	0.068	0.679
THCa	0.01	0.018	0.179
Total Cannabinoids		2.901	29.01
Total Potential THC		0.084	0.836
Total Potential CBD		2.539	25.39
Total Potential CBG		0.032	0.322

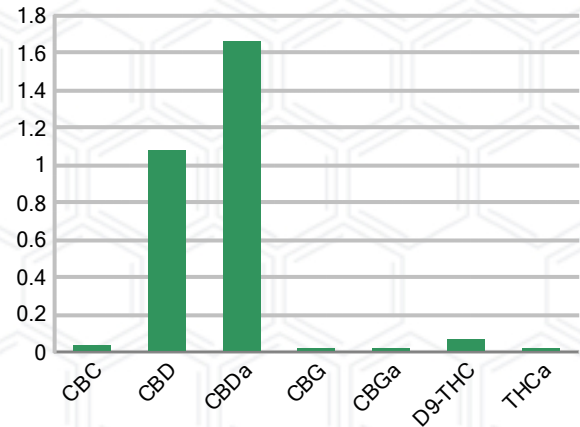
Ratio of Total Potential CBD to Total Potential THC **30.23 : 1**

Ratio of Total Potential CBG to Total Potential THC **0.38 : 1**

SAMPLE IMAGE



CANNABINOIDS % Weight



*Total Cannabinoids refers to the sum of all cannabinoids detected.

*Total Potential CBD = (0.877 x CBDa) + CBD. *Total Potential THC = (0.877 x THCa) + THC. *Total Potential CBG = (0.877 x CBGa) + CBG.

*Total Potential THC/CBD are calculated to take into account the loss of an acid group during decarboxylation.



J. Hobgood
Laboratory Manager

SIGNATURE

Jamie Hobgood

LABORATORY MANAGER

02/22/2023 9:39 AM

DATE

This product has been tested by CannaBusiness Laboratories using validated testing methodologies and a quality system. Values reported relate only to the product tested. CannaBusiness Laboratories makes no claims as to the efficacy, safety, or other risks associated with any detected or non-detected levels of any compounds reported herein. This Certificate shall not be reproduced except in full, without the written permission of CannaBusiness Laboratories. Photo is of sample received by the lab and may vary from final packaging. The results apply to the sample as received.



Certificate of Analysis

CANNABUSINESS LABORATORIES, LLC

Customer

Pharm CBD
2580 Highway 42 West
Bedford, KY 40006



Sample Name: 23015-1

Sample ID: 230220002

Order Number: CB230220002

Product Type: Concentrate

Sample Type: Concentrate

Received Date: 02/20/2023

Batch Number: 23015

COA released: 02/22/2023 9:39 AM

Potency (mg/g)

Date Tested: 02/21/2023

Method: CB-SOP-028

Instrument:

0.084 % Total THC	2.539 % Total CBD	2.901 % Total Cannabinoids	29.01 mg/g Total Cannabinoids
-----------------------------	-----------------------------	--------------------------------------	---

Analyte	Result	Units	LOQ	Result	Units
CBC (Cannabichromene)	0.037	%	0.010	0.373	mg/g
CBD (Cannabidiol)	1.079	%	0.010	10.79	mg/g
CBDa (Cannabidiolic Acid)	1.664	%	0.010	16.64	mg/g
CBDV (Cannabidivarin)	ND	%	0.010	ND	mg/g
CBG (Cannabigerol)	0.017	%	0.010	0.171	mg/g
CBGa (Cannabigerolic Acid)	0.017	%	0.010	0.172	mg/g
CBN (Cannabinol)	ND	%	0.010	ND	mg/g
D8-THC (D8-Tetrahydrocannabinol)	ND	%	0.010	ND	mg/g
D9-THC (D9-Tetrahydrocannabinol)	0.068	%	0.010	0.679	mg/g
THCa (Tetrahydrocannabinolic Acid)	0.018	%	0.010	0.179	mg/g



J. Hobgood
Laboratory Manager

Jamie Hobgood

02/22/2023 9:39 AM

SIGNATURE

DATE

NT = Not tested, ND = Not detected; LOQ = Limit of Quantitation; <LOQ = Detected; >ULOL = Above upper limit of linearity; CFU/g = Colony forming units per 1 gram; TNTC = Too numerous to count

This product has been tested by CannaBusiness Laboratories using validated testing methodologies and a quality system. Values reported relate only to the product tested. CannaBusiness Laboratories makes no claims as to the efficacy, safety, or other risks associated with any detected or non-detected levels of any compounds reported herein. This Certificate shall not be reproduced except in full, without the written permission of CannaBusiness Laboratories. Photo is of sample received by the lab and may vary from final packaging. The results apply to the sample as received.